

I Multi-Purpose Clamps & Tools

PREFORMED BAND CLAMPS



ULTRA-LOK® CLAMPS

Ultra-Lok Clamps are manufactured from 201 Stainless Steel. The buckle is thicker and stronger than standard band clamps for superior holding strength. The powerful Ultra-Lok Tool is portable which enables the operator to bring the tool to the hose, instead of the hose to the tool, for much easier assembly.

JR®-TYPE PREFORMED CLAMPS

Jr®-type preformed clamps are available in both galvanized carbon steel and 201 stainless steel. All buckles are stainless steel.

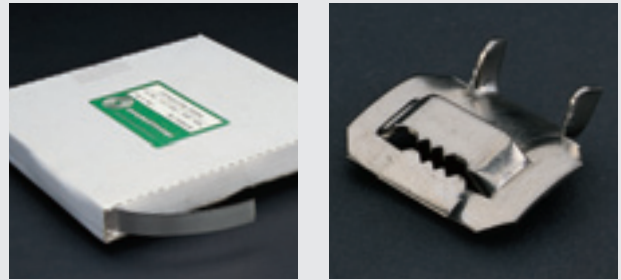
Jr clamps are designed for use with high production air tools, or the C001 Banding Tool (Page 50).

PUNCH-TYPE PREFORMED CLAMPS

Punch type preformed clamps are available in galvanized carbon steel and 201 stainless steel. All buckles are stainless steel.

Punch clamps are designed for use with the punch style tool (Page 50) for the ultimate in field serviceability.

BANDING AND BUCKLES



Banding is cartoned in 100 foot rolls and available in 201 stainless steel. Buckles, sold separately, are 201 stainless steel. Banding features specially rolled edges to reduce the possibility of injury. Use the C001 Banding Tool (Page 50) to install.

WORM GEAR CLAMPS

Worm gear clamps are available in standard 1/2" band, miniature 5/16" band and quick release 1/2" band. All are manufactured with stainless steel band and stainless steel housing, with your choice of a carbon steel or stainless steel screw.



T-BOLT CLAMPS

T-Bolt clamps provide 360 degrees of sealing surface, and are particularly useful for high torque applications.



BAND CLAMPS, BANDING, AND BUCKLES

ULTRA-LOK® SMOOTH I.D. CLAMPS



Band: 201 Stainless
Buckle: 201 Stainless

clamp width	clamp i.d.	part number	list/100	carton qty.
3/4	2	UL227	674.39	100
3/4	2-3/4	UL210	735.04	50
3/4	3	UL211	796.18	50
3/4	3-1/2	UL212	847.34	50
3/4	4	UL213	972.72	25
3/4	4-1/2	UL214	1043.76	25
3/4	5	UL215	1121.80	25
3/4	5-1/2	UL270	1171.28	25
3/4	6	UL216	1297.92	25
3/4	6-1/2	UL217	1430.08	25
3/4	7	UL218	1561.92	25
3/4	8	UL219	1758.56	25
3/4	9	UL228	1968.80	10

Jr®-TYPE PREFORMED-SMOOTH I.D.



Band: Galvanized Steel
Buckle: 201 Stainless

clamp width	clamp i.d.	part number	list/100	carton qty.
3/8	13/16	JS301	94.64	100
3/8	1	JS343	98.70	100
3/8	1-3/8	JS302	104.12	100
3/8	2	JS345	129.12	100
3/8	2-1/2	JS321	190.85	100
3/8	3	JS346	166.55	100
3/8	3-1/2	JS355	239.42	100
3/8	4	JS348	263.09	100
1/2	1	JS303	131.94	100
1/2	1-1/4	JS304	145.24	100
1/2	1-1/2	JS331	164.18	100
1/2	1-3/4	JS336	191.73	100
1/2	2	JS337	198.88	100
1/2	2-1/2	JS333	211.00	100
1/2	2-3/4	JS330	228.85	100
1/2	3	JS334	253.67	100
1/2	3-1/2	JS347	285.82	100
1/2	4	JS349	321.30	100

5/8	1-1/2	JS305	171.39	100
5/8	1-3/4	JS306	189.73	100
5/8	2	JS307	207.82	100
5/8	2-1/4	JS308	221.06	100
5/8	2-1/2	JS309	239.00	100

3/4	2	JS327	254.27	100
3/4	2-3/4	JS310	285.40	50
3/4	3	JS311	301.04	50
3/4	3-1/2	JS312	324.84	50
3/4	4	JS313	375.52	25
3/4	4-1/2	JS314	396.36	25
3/4	5	JS315	433.56	25
3/4	5-1/4	JS370	533.56	25
3/4	6	JS316	498.56	25
3/4	7	JS318	591.28	25
3/4	8	JS319	840.00	25

Band: 201 Stainless

Buckle: 201 Stainless

1/4	13/16	JS240	233.09	100
1/4	1	JS242	234.09	100
1/4	1-3/8	JS241	255.39	100
1/4	1-1/2	JS252	253.48	100
1/4	2	JS253	284.00	100
1/4	2-1/2	JS220	315.73	100
1/4	2-3/4	JS256	338.39	100
1/4	3	JS244	335.15	100
1/4	3-1/2	JS257	359.79	100
1/4	4	JS258	435.85	100
1/4	4-1/2	JS259	513.61	100

3/8	13/16	JS201	241.33	100
3/8	1	JS243	277.67	100
3/8	1-3/8	JS202	271.85	100
3/8	2	JS245	307.73	100
3/8	2-1/2	JS221	350.45	100
3/8	3	JS246	394.33	100
3/8	3-1/2	JS255	484.82	100
3/8	4	JS248	466.79	100

1/2	1	JS203	336.30	100
1/2	1-1/4	JS204	370.91	100
1/2	1-1/2	JS231	426.91	100
1/2	1-3/4	JS236	484.21	100
1/2	2	JS237	508.15	100
1/2	2-1/2	JS233	533.15	100
1/2	2-3/4	JS230	559.48	100
1/2	3	JS234	618.82	100
1/2	3-1/2	JS247	679.48	100
1/2	4	JS249	741.73	100

5/8	1-1/2	JS205	446.18	100
5/8	1-3/4	JS206	493.27	100
5/8	2	JS207	540.76	100
5/8	2-1/4	JS208	575.03	100
5/8	2-1/2	JS209	613.70	100

3/4	2	JS227	667.94	100
3/4	2-3/4	JS210	728.00	50
3/4	3	JS211	788.48	50
3/4	3-1/2	JS212	839.28	50
3/4	4	JS213	963.28	25
3/4	4-1/2	JS214	1033.68	25
3/4	5	JS215	1117.68	25
3/4	5-1/4	JS270	1160.00	25
3/4	6	JS216	1285.80	25
3/4	7	JS218	1547.04	25
3/4	8	JS219	1741.92	25

PUNCH-TYPE PREFORMED



Band: Galvanized Steel
Buckle: 201 Stainless

clamp width	clamp i.d.	part number	list/100	carton qty.
3/8	13/16	CP3	68.18	100
3/8	1-3/8	CP311	79.94	100
5/8	1	CP4	84.48	100
5/8	1-1/4	CP5	89.21	100
5/8	1-1/2	CP6	89.21	100
5/8	1-3/4	CP7	104.30	100
5/8	2	CP8	111.52	100
5/8	2-1/4	CP9	118.76	100
5/8	2-1/2	CP10	143.46	50
5/8	2-3/4	CP11	149.94	50
5/8	3	CP12	157.34	50
5/8	3-1/2	CP14	168.00	50
5/8	4	CP16	193.68	25
5/8	4-1/2	CP18	204.60	25
5/8	5	CP20	215.76	25
5/8	6	CP24	234.80	25
5/8	7	CP28	270.92	25
5/8	8	CP32	379.64	25

Band: 201 Stainless
Buckle: 201 Stainless

3/8	13/16	CP3-S	166.30	100
3/8	1-3/8	CP311-S	190.76	100
5/8	1	CP4-S	252.52	100
5/8	1-1/4	CP5-S	265.45	100
5/8	1-1/2	CP6-S	281.82	100
5/8	1-3/4	CP7-S	309.12	100
5/8	2	CP8-S	326.64	100
5/8	2-1/4	CP9-S	348.27	100
5/8	2-1/2	CP10-S	377.40	50
5/8	2-3/4	CP11-S	399.64	50
5/8	3	CP12-S	417.76	50
5/8	3-1/2	CP14-S	461.22	50
5/8	4	CP16-S	523.52	25
5/8	4-1/2	CP18-S	563.64	25
5/8	5	CP20-S	605.92	25
5/8	6	CP24-S	684.48	25
5/8	7	CP28-S	814.80	25
5/8	8	CP32-S	891.04	25

I.D. TIE-LOK TIES



304 Stainless

width in.	length in.	part number	list/100	carton qty.
1/4	10	AS211	207.64	100
1/4	16-1/2	AS212	271.94	100
1/4	22-1/2	AS213	336.94	100
1/4	29	AS214	403.70	100
1/4	35	AS215	464.03	100

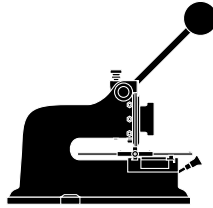
I.D. TAGS



304 Stainless

width in.	length in.	part number	list/100	carton qty.
3/4	2	ID100	158.42	100
1-1/2	2-1/2	ID101	216.97	100
3/4	3-1/2	ID102	208.24	100

I.D. TAG IMPRINTERS



character wheel	part number	list each	carton qty.
3/32"	ID200	POR	1
1/16"	ID202	POR	1
1/8"	ID203	POR	1
3/16"	ID204	POR	1
1/4"	ID205	POR	1

HANDY I.D. KIT

kit contains:

- 1 tie-lok tool
- 200 i.d. tags (3/4 x 2)
- 100 i.d. tags (1-1/2 x 2-1/2)
- 100 tie-loks (1/4 x 8)
- 200 tie-loks (1/4 x 14-1/2)
- 100 tie-loks (1/4 x 21)

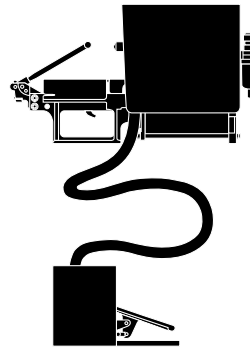
part number	list each	carton qty.
ID300	POR	1

ULTRA-LOK ELECTRIC INSTALLATION TOOL



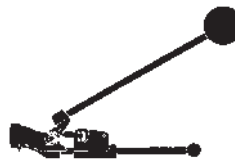
part number	description	list each
UL9010	for Ultra-Lok Preformed Clamps	POR

STANDARD AIR TOOL & COMPONENTS



part number	description	list each
S750	with S180 head	POR

CENTER PUNCH TOOLS & ACCESSORIES



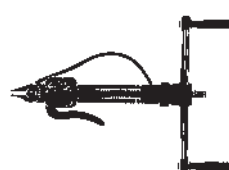
part number	description	list each
T300	for 5/8" wide clamps	POR

COMPACT TOOL SET



part number	list each
S38	POR

BAND TOOL



part number	list each
C001	POR



BAND TOOL ADAPTER



part number	description	list each
J001	Jr adapter	POR
J050	heavy duty adapter	POR

TIE-LOK TOOL



part number	list each
A920	POR

BAND



201 Stainless Steel			
band width	part number	list/ 100 ft.	carton qty.
1/4	C202	108.97	100 ft.
3/8	C203	141.94	100 ft.
1/2	C204	191.85	100 ft.
5/8	C205	232.18	100 ft.
3/4	C206	286.33	100 ft.
Galvanized Carbon Steel			
3/8	C303	65.52	100 ft.
1/2	C304	84.94	100 ft.
5/8	C305	104.79	100 ft.
3/4	C306	124.15	100 ft.

BUCKLES



201 Stainless Steel			
band width	part number	list/ 100	carton qty.
1/4	C252	88.61	100
3/8	C253	97.91	100
1/2	C254	132.39	100
5/8	C255	165.39	100
3/4	C256	200.00	100
Galvanized Carbon Steel			
3/8	C353	51.24	100
1/2	C354	66.33	100
5/8	C355	79.12	100
3/4	C356	93.39	100

WORM GEAR CLAMPS



STANDARD WORM GEAR (5/16" screw, 1/2" band)



Screw: Galvanized Steel
Band: 301 Stainless Steel

size range	part number	list/ 100	carton qty.
3/8 x 7/8	WGCS-6	135.19	10
7/16 x 1	WGCS-8	135.19	10
9/16 x 1-1/16	WGCS-10	135.19	10
9/16 x 1-1/4	WGCS-12	140.60	10
11/16 x 1-1/2	WGCS-16	140.60	10
3/4 x 1-3/4	WGCS-20	140.60	10
1-1/16 x 2	WGCS-24	140.60	10
1-5/16 x 2-1/4	WGCS-28	140.60	10
1-9/16 x 2-1/2	WGCS-32	140.60	10
1-13/16 x 2-3/4	WGCS-36	146.00	10
2-1/16 x 3	WGCS-40	194.67	10
2-5/16 x 3-1/4	WGCS-44	221.71	10
2-9/16 x 3-1/2	WGCS-48	221.71	10
2-13/16 x 3-3/4	WGCS-52	243.34	10
3-1/16 x 4	WGCS-56	243.34	10
3-5/16 x 4-1/4	WGCS-60	254.15	10
3-9/16 x 4-1/2	WGCS-64	254.15	10
4-1/16 x 5	WGCS-72	270.38	10
4-5/8 x 5-1/2	WGCS-80	313.64	10
4-3/32 x 6	WGCS-88	319.04	10
4-1/2 x 6-1/2	WGCS-96	324.45	10
5 x 7	WGCS-104	329.86	10
6-1/2 x 8-1/2	WGCS-128	443.42	10
8 x 10	WGCS-152	475.86	10
10-1/4 x 12-1/4	WGCS-188	524.53	10
11 x 13	WGCS-200	546.16	10
11-3/4 x 13-3/4	WGCS-212	589.42	10
12-1/2 x 14-1/2	WGCS-224	648.90	10
14 x 16	WGCS-248	746.24	10
15-3/8 x 17-3/8	WGCS-270	811.13	10
18 x 20	WGCS-312	908.46	10
19-1/8 x 21-1/4	WGCS-332	930.09	10
22-7/8 x 24-7/8	WGCS-390	940.91	10

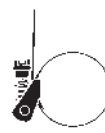
STANDARD WORM GEAR
(continued on next page)

STANDARD WORM GEAR (continued from previous page)

Screw: 305 Stainless Steel
Band: 301 Stainless Steel

size range	part number	list/ 100	carton qty.
3/8 x 7/8	WGSS-6	183.86	10
7/16 x 1	WGSS-8	183.86	10
9/16 x 1-1/16	WGSS-10	183.86	10
9/16 x 1-1/4	WGSS-12	190.34	10
11/16 x 1-1/2	WGSS-16	190.34	10
3/4 x 1-3/4	WGSS-20	195.75	10
1-1/16 x 2	WGSS-24	195.75	10
1-5/16 x 2-1/4	WGSS-28	195.75	10
1-9/16 x 2-1/2	WGSS-32	195.75	10
1-13/16 x 2-3/4	WGSS-36	207.65	10
2-1/16 x 3	WGSS-40	231.44	10
2-5/16 x 3-1/4	WGSS-44	264.97	10
2-9/16 x 3-1/2	WGSS-48	264.97	10
2-13/16 x 3-3/4	WGSS-52	282.27	10
3-1/16 x 4	WGSS-56	282.27	10
3-5/16 x 4-1/4	WGSS-60	294.17	10
3-9/16 x 4-1/2	WGSS-64	294.17	10
4-1/16 x 5	WGSS-72	323.37	10
4-5/8 x 5-1/2	WGSS-80	334.18	10
4-3/32 x 6	WGSS-88	375.28	10
4-1/2 x 6-1/2	WGSS-96	386.10	10
5 x 7	WGSS-104	386.10	10
6-1/2 x 8-1/2	WGSS-128	577.52	10
8 x 10	WGSS-152	634.84	10
10-1/4 x 12-1/4	WGSS-188	692.16	10
11 x 13	WGSS-200	704.06	10
11-3/4 x 13-3/4	WGSS-212	738.66	10
12-1/2 x 14-1/2	WGSS-224	790.58	10
14 x 16	WGSS-248	970.11	10
15-3/8 x 17-3/8	WGSS-270	1028.51	10
18 x 20	WGSS-312	1113.95	10

QUICK RELEASE WORM GEAR
(5/16" screw, 1/2" band)



Screw: Galvanized Steel
Band: 301 Stainless Steel

size range	part number	list/ 100	carton qty.
1/2 x 1-1/4	QGCS-12	201.77	10
3/4 x 1-3/4	QGCS-20	205.46	10
1 x 2-1/4	QGCS-28	212.86	10
1 x 2-3/4	QGCS-36	214.72	10
1-1/2 x 3-1/2	QGCS-48	232.52	10
1 x 4	QGCS-56	248.75	10
2 x 5	QGCS-72	286.60	10
2-1/16 x 6	QGCS-88	335.27	10
1-3/4 x 7	QGCS-104	416.38	10
1-3/4 x 8-9/16	QGCS-128	416.38	10
2 x 10	QGCS-152	605.64	10
2-1/16 x 12-5/16	QGCS-188	492.08	10

Screw: 410 Stainless Steel
Band: 301 Stainless Steel

1/2 x 1-1/4	QGSS-12	262.80	10
3/4 x 1-3/4	QGSS-20	281.19	10
1 x 2-1/4	QGSS-28	299.58	10
1 x 2-3/4	QGSS-36	306.06	10
1-1/2 x 3-1/2	QGSS-48	387.18	10
1 x 4	QGSS-56	397.99	10
2 x 5	QGSS-72	404.48	10
2-1/16 x 6	QGSS-88	479.10	10
1-3/4 x 7	QGSS-104	542.91	10
1-3/4 x 8-9/16	QGSS-128	542.91	10
2 x 10	QGSS-152	578.60	10
2-1/16 x 12-5/16	QGSS-188	624.03	10
10-3/16 x 14	QGSS-216	681.35	10
10 x 16	QGSS-248	762.46	10
14-1/4 x 18	QGSS-280	831.67	10
14 x 20	QGSS-312	988.49	10

MINIATURE WORM GEAR
(1/4" screw, 5/16" band)



Screw: Galvanized Steel
Band: 301 Stainless Steel

size range	part number	list/ 100	carton qty.
7/32 x 5/8	MGCS-4	108.15	10
7/16 x 11/16	MGCS-5	108.15	10
5/16 x 7/8	MGCS-6	118.97	10
7/16 x 1	MGCS-8	129.78	10
1/2 x 1-1/16	MGCS-10	129.78	10
9/16 x 1-1/4	MGCS-12	135.19	10
11/16 x 1-1/2	MGCS-16	135.19	10
7/8 x 1-3/4	MGCS-20	140.60	10

Screw: 305 Stainless Steel
Band: 301 Stainless Steel

7/32 x 5/8	MGSS-4	138.43	10
7/16 x 11/16	MGSS-5	138.43	10
5/16 x 7/8	MGSS-6	148.17	10
7/16 x 1	MGSS-8	167.63	10
1/2 x 1-1/16	MGSS-10	167.63	10
9/16 x 1-1/4	MGSS-12	179.53	10
11/16 x 1-1/2	MGSS-16	179.53	10
7/8 x 1-3/4	MGSS-20	183.86	10



T-BOLT CLAMPS

T-BOLT CLAMPS

Bolt & Trunion: Galvanized Steel
Band: Stainless Steel



size range	part number	list each
1.31 x 1.56	TBCS-21	8.71
1.56 x 1.81	TBCS-25	8.71
1.69 x 1.94	TBCS-27	8.71
1.81 x 2.06	TBCS-29	8.71
2.06 x 2.31	TBCS-33	8.89
2.19 x 2.50	TBCS-35	8.89
2.31 x 2.62	TBCS-37	8.89
2.38 x 2.69	TBCS-38	8.89
2.44 x 2.75	TBCS-39	8.67
2.56 x 2.87	TBCS-41	8.67
2.69 x 3.00	TBCS-43	8.67
2.81 x 3.12	TBCS-45	9.09
2.94 x 3.25	TBCS-47	9.09
3.06 x 3.37	TBCS-49	9.09
3.31 x 3.62	TBCS-53	9.09
3.56 x 3.87	TBCS-57	9.09
3.63 x 3.94	TBCS-58	9.09
3.81 x 4.12	TBCS-61	9.09
4.06 x 4.37	TBCS-65	9.09
4.31 x 4.62	TBCS-69	9.09
4.56 x 4.87	TBCS-73	9.09
4.81 x 5.12	TBCS-77	9.34
5.06 x 5.37	TBCS-81	9.34
5.31 x 5.62	TBCS-85	9.43
5.56 x 5.87	TBCS-89	9.43
5.81 x 6.12	TBCS-93	9.26
6.06 x 6.37	TBCS-97	9.26
6.31 x 6.62	TBCS-101	9.26
6.56 x 6.87	TBCS-105	9.26
6.81 x 7.12	TBCS-109	9.43
7.06 x 7.37	TBCS-113	10.04
7.31 x 7.62	TBCS-117	10.04
7.56 x 7.87	TBCS-121	10.04
7.81 x 8.12	TBCS-125	10.04
8.06 x 8.37	TBCS-129	9.90
8.69 x 9.19	TBCS-139	10.80
10.63 x 11.13	TBCS-170	12.01
12.63 x 13.13	TBCS-202	12.34

Bolt & Trunion: Stainless Steel
Band: Stainless Steel

1.31 x 1.56	TBSS-21	11.95
1.56 x 1.81	TBSS-25	11.95
1.69 x 1.94	TBSS-27	11.95
1.81 x 2.06	TBSS-29	11.95
2.06 x 2.31	TBSS-33	11.95
2.19 x 2.50	TBSS-35	11.95
2.31 x 2.62	TBSS-37	11.95
2.38 x 2.69	TBSS-38	11.96
2.44 x 2.75	TBSS-39	11.96
2.56 x 2.87	TBSS-41	11.96
2.69 x 3.00	TBSS-43	11.96
2.81 x 3.12	TBSS-45	11.96
2.94 x 3.25	TBSS-47	11.96
3.06 x 3.37	TBSS-49	12.15
3.31 x 3.62	TBSS-53	12.15
3.56 x 3.87	TBSS-57	12.15
3.63 x 3.94	TBSS-58	12.15
3.81 x 4.12	TBSS-61	12.15
4.06 x 4.37	TBSS-65	12.28
4.31 x 4.62	TBSS-69	12.28
4.56 x 4.87	TBSS-73	12.99
4.81 x 5.12	TBSS-77	12.99
5.06 x 5.37	TBSS-81	13.09
5.31 x 5.62	TBSS-85	13.26
5.56 x 5.87	TBSS-89	13.26
5.81 x 6.12	TBSS-93	13.46
6.06 x 6.37	TBSS-97	13.46
6.31 x 6.62	TBSS-101	13.46
6.56 x 6.87	TBSS-105	13.46
6.81 x 7.12	TBSS-109	13.46
7.06 x 7.37	TBSS-113	13.71
7.31 x 7.62	TBSS-117	14.09
7.56 x 7.87	TBSS-121	14.09
7.81 x 8.12	TBSS-125	14.09
8.06 x 8.37	TBSS-129	14.45
8.69 x 9.19	TBSS-139	15.43
10.63 x 11.13	TBSS-170	17.20
12.63 x 13.13	TBSS-202	17.57

All T-Bolt Clamps are packaged 10 per bag.

